



District 1 Code Analysis - FY18

Data extracted for Code cases opened between October 1, 2017 - Sept 30, 2018

All Cases

Reported Complaint Type	Total	Commercial	Neighborhood	Multifamily
Land Use	925	87	719	119
Property Abatement	2,190	331	1,542	317
Structure Condition	1,153	239	349	565
Work Without Permit	112	15	86	11
SWS Chp 15	9	3	2	4
Total	4,389	675	2,698	1,016
Total Percent of Citywide Complaints	13.6%	9.2%	15.0%	14.7%

Repeat Offenders, Short Term Rentals, and Rooming and Boarding Homes

**Filtering cases by complaints occurring at Repeat Offender Properties (ROP), Short Term Rentals (STR), or Rooming and Boarding Homes (RBH). Austin Code categorizes them as Operating Licenses types.*

Case Code	Total	Commercial	Neighborhood	Multifamily
Repeat Offender Properties	474	58	6	410
Short Term Rentals	277	10	237	30
Rooming and Boarding Homes	17	3	12	2
Total	768	71	255	442
Total Percent of Citywide Complaints	2.4%	1.0%	1.4%	6.4%

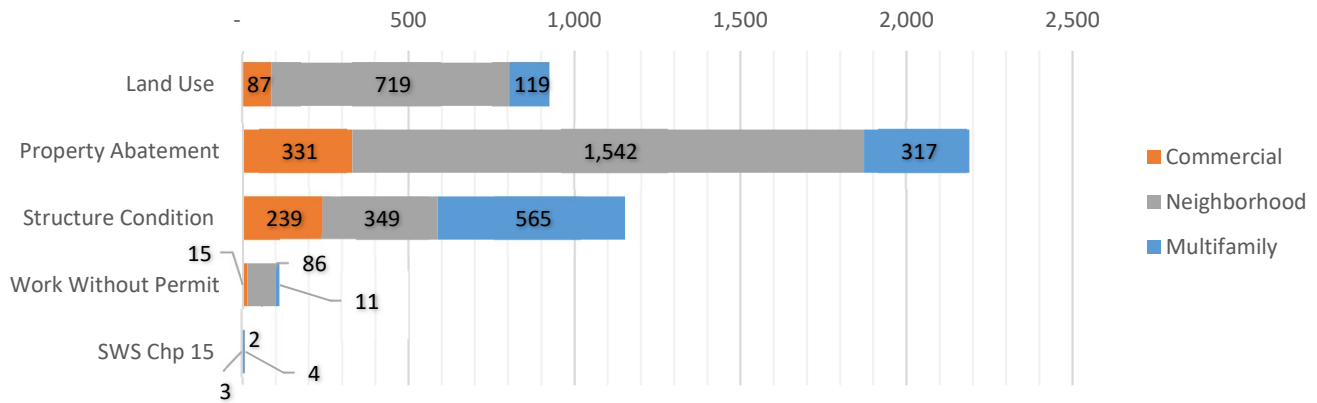
Reported Complaint Type	Total	ROP	STR	RBH
Land Use	925	15	276	7
Property Abatement	2,190	49	-	2
Structure Condition	1,153	405	-	6
Work Without Permit	112	2	-	2
SWS Chp 15	9	3	1	-
Total	4,389	474	277	17
Total Percent of Citywide Complaints	13.6%	16.8%	16.5%	17.0%

Council District Matrix - All Cases

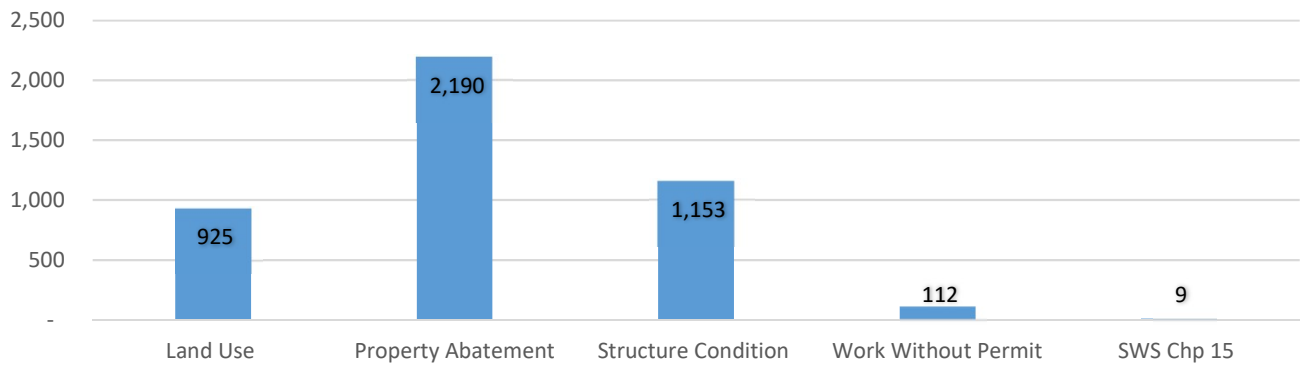
This matrix shows your Council District's percentage of total complaints in comparison with others.

Council District	% Total	% Commercial	% Neighborhood	% Multifamily
District 1	13.6%	9.2%	15.0%	14.7%
District 2	11.4%	12.6%	12.3%	7.9%
District 3	13.3%	23.4%	9.9%	11.8%
District 4	15.3%	8.4%	13.0%	28.7%
District 5	7.1%	4.2%	9.1%	4.8%
District 6	3.1%	3.1%	3.9%	1.1%
District 7	8.1%	10.0%	8.7%	4.3%
District 8	3.9%	1.8%	6.0%	0.7%
District 9	16.9%	21.4%	12.7%	23.0%
District 10	7.0%	5.9%	9.0%	2.9%

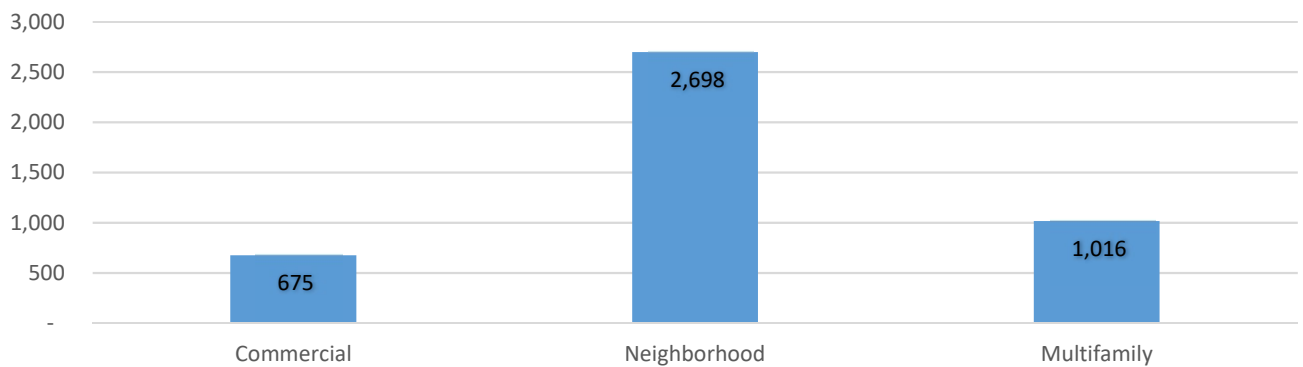
Complaint Types by Team



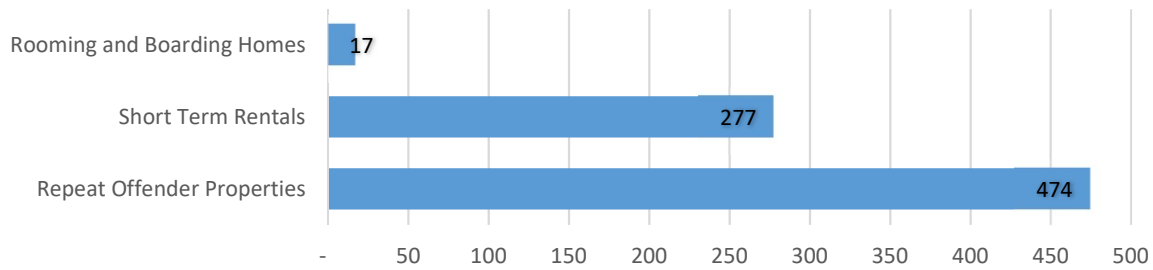
Cases by Complaint Type



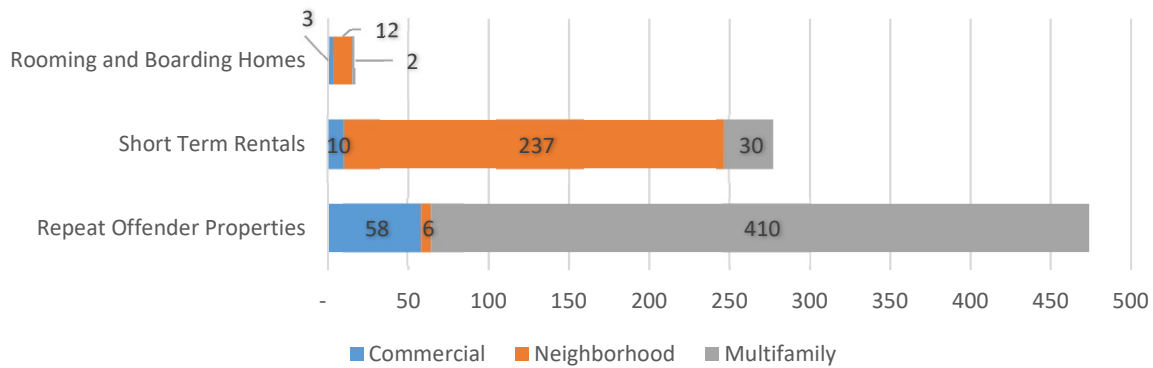
Cases by Team



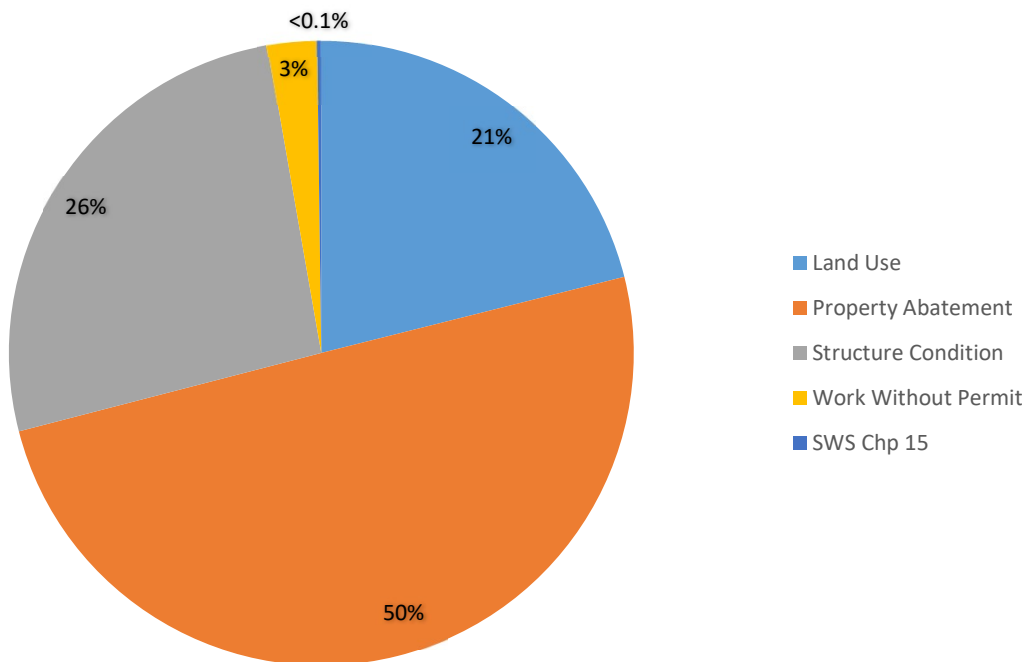
Cases by Operating License Types



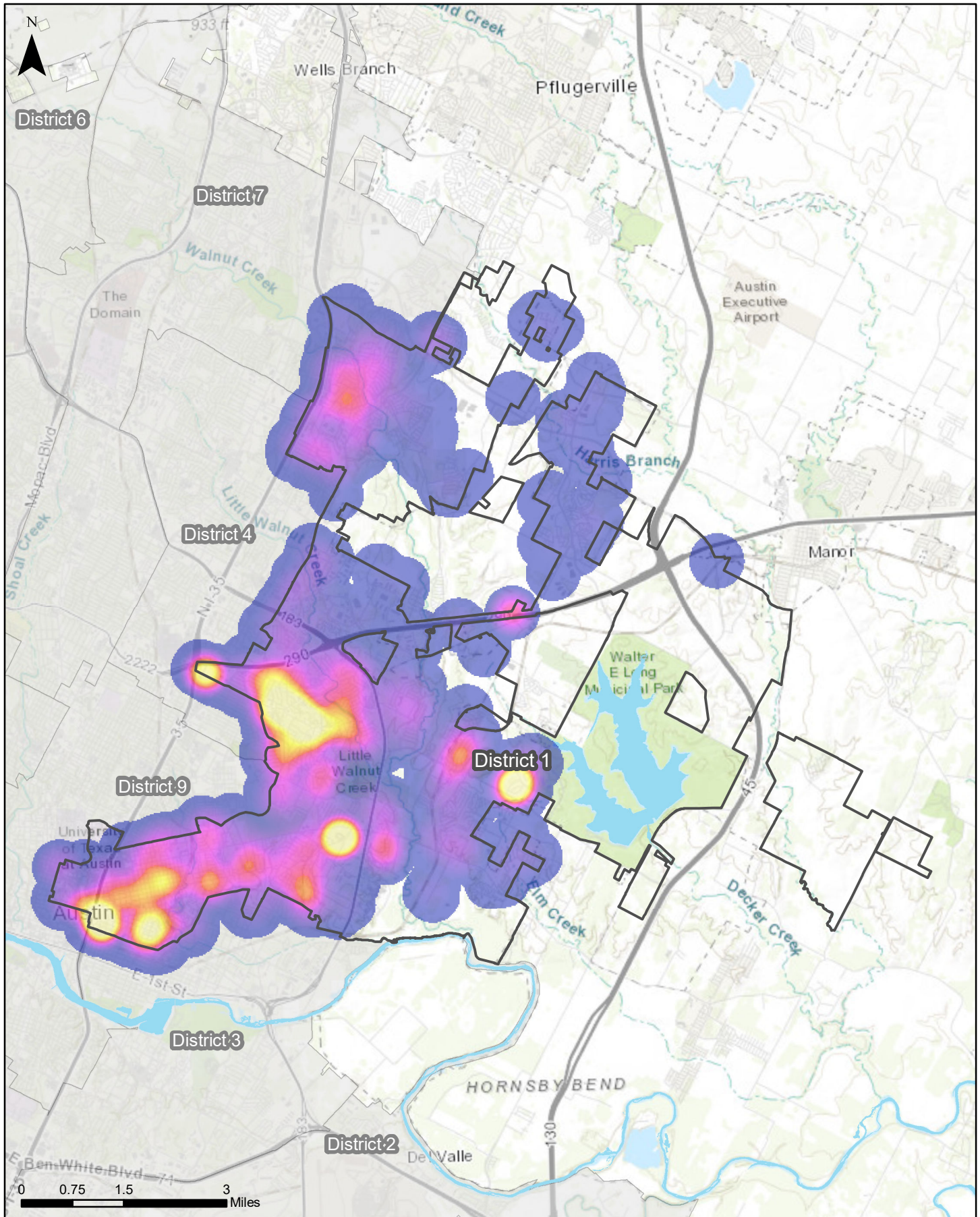
Operating License Cases by Team



Operating License Complaint Types

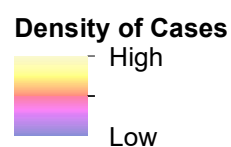


Council District 1



This map examines the density of code cases opened in District 1 between October 1, 2017 and September 30, 2018.

Sources: AMANDA Case Management Database; GIS DM 2019



AUSTINCODE
DEPARTMENT

Map generated on:
5/20/2019